

# Recruitment Pack



Follow us on social media

[www.fatherhudsons.org.uk](http://www.fatherhudsons.org.uk)



@FatherHudsons



@FatherHudsons



@Father-Hudsons



@FatherHudsonsCaritas



@FatherHudsons



@FatherHudsons



Collaborative, Inclusive, Compassionate

Charity no. 512992

# Contents

**Welcome &  
Values**

**1**

**Vision, Mission  
& Strategy**

**2**

**About Us: Services  
& Projects**

**3**

**Where we work, EDI,  
Safer Recruitment**

**4**

**Employee  
Benefits**

**5**

**Contact Us**

**6**

# Welcome

# 1

## Thank you

Dear applicant,

Thank you for your interest in being part of Father Hudson's Caritas. We welcome

applications from compassionate people who want to make a difference to peoples lives and work together for our vision of a world where everyone matters.

We are a regional social care and community charity covering the Catholic Archdiocese of Birmingham (Staffordshire, West Midlands, Worcestershire, Warwickshire and Oxfordshire). Since 1902 we have been responding to need, helping all people to lead fulfilled lives. We deliver services over 5 themes: homelessness, older people, children and families, refugees and migrants, and disability.

Please find enclosed further information on Father Hudson's Caritas support and benefits. We are a proud employer of over 330 people, who work alongside over 200 volunteers.

Our Mission is inspired by the gospel and Catholic Social Teaching; we actively employ and support people of all faiths and none. Our team live out our values - we are inclusive and respectful, we challenge injustice, we are compassionate and collaborative, we seek excellence and work with people's strengths.

### Our Senior Management Team



## Our Values

Our Core Values drive our organisation forward and are fundamental to the care that we provide. They set an example of behaviours for all our staff and volunteers, when working and representing our charity.



# Vision, Mission & Strategy

## Our Vision

*is a world where everyone matters.*



*Where all people and communities thrive and have a genuine sense of belonging.*

## Our Mission

*is to respond to need, helping all people to lead fulfilled lives through our range of services and partnerships.*


*Our inspiration is the example of Jesus in the Gospel and the Catholic Social Teaching that flows from this.*

## Our Strategy 2025–2028

*Our strategy focuses on delivering high-quality services to people of all faiths and none. We aim to enable individuals to thrive, demonstrate the impact of our work, and live out our values—compassion, striving for excellence, and working in partnership with people’s strengths.*


## Services/Projects

### Homelessness



**Tabor Living** and **Fatima House** provide a safe home and support for people who have experienced homelessness or who are vulnerable. We work with our tenants and guests to develop the skills and confidence to live independently.

### Disability



Our Disability services, **St Catherine's Bungalows**, **Coleshill Day Services** and **Domiciliary Care and Supported Living** provide support based on an individual's needs while maximising their choice and enjoyment of life.

### Refugees and Migrants




Our **Brushstrokes Community Project**, **Sophia House**, **Nicolas Barré House** support people to feel safe and secure as they settle into life in the UK. Sophia and Nicolas Barré House offer accommodation and support. Brushstrokes provides a range of services: advice, outreach, employment support, English classes and digital learning, health promotion and information, social and wellbeing activities, a community café, and donations of food and clothing

### Older People



In **St Joseph's Care Home** we care for older people and those with dementia, offering a range of engaging activities and responsive care. Our **Young at Heart** project builds communities and reduces loneliness for over 50s in North Staffordshire, through lunch clubs and social activities.

### Children and Families



**New Routes Fostering** recruits, trains and supports foster carers to provide a secure, happy environment for children in need. Our **Family Support Service** gives whole family support through times of difficulty. **Origins** helps a person find out about their family of origin and supports them with the emotional impact.

# Working with

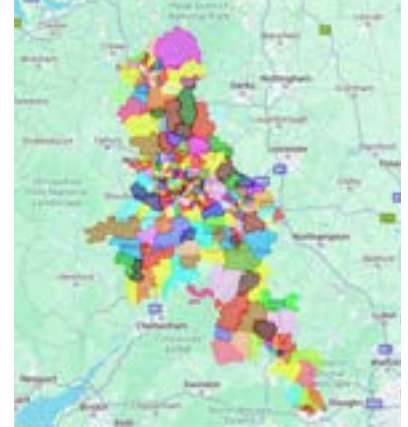


Collaborative, Inclusive, Compassionate

## Where we work:

Our Head Office is based in Coleshill, along with our Disability Services and St Joseph's Care Home.

We have projects and services across the Archdiocese of Birmingham, including Brushstrokes Community Project in Smethwick, Nicolas Barré House in Willenhall, Tabor Living, Sophia House and Fatima House in Birmingham and Young at Heart in North Staffordshire.



Our Children and Families department spans the Archdiocese, with New Routes Fostering recruiting Foster Carers from across the Midlands, and Family Support Workers based in schools in Birmingham, Banbury, Stoke-on-Trent and Newcastle-under-Lyme.

## Equality, Diversity and Inclusion:

Equality, Diversity and Inclusion is at the core of our Vision, Mission, and Values. We are committed to an inclusive workforce that fully represents many different cultures, backgrounds and viewpoints. Together, we continue to build an inclusive culture that encourages, supports, and celebrates the diverse voices of our employees and lived experiences. It drives our improvement and connects us closer to our service users and the communities we serve.



## Safer Recruitment:

We are committed to the highest standards of Safeguarding to protect the individuals we support, and the wellbeing of our staff and volunteers. This is demonstrated in our Safer Recruitment process.



Life assurance



Career Development Opportunities



Refer a friend scheme



Enhanced Annual Leave



Policies to support work-life balance



24/7 confidential wellbeing support

charityworkerdiscounts

Discounts



Pension with employer contribution



Wellbeing Support



Financial Perks



Eligible for **BLUE LIGHT CARD™**

Costs £4.99



*Absolutely love my Blue Light Card! I've saved loads on shopping, meals out, and theatre tickets. The app is easy to use, and the deals are fantastic. It's paid for itself many times over—highly recommend!*



Aviva Digicare+ Workplace

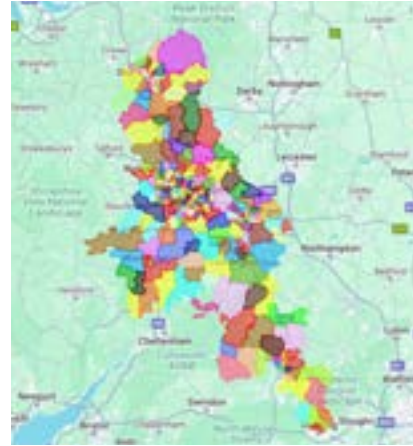


Inclusive Employer

# Contact Us

# 6

**We work across the Catholic Archdiocese of Birmingham, covering Staffordshire, West Midlands, Worcestershire, Warwickshire and Oxfordshire**



**Head Office:**  
St George's House  
Gerards Way  
Coleshill  
B46 3FG



**01675 434000**



**recruitmentHR@fatherhudsons.org.uk**



**www.fatherhudsons.org.uk**

**If you would like to apply for the role, please complete the application form and return to us by the closing date specified on the vacancy you are interested in applying for.**